



亿利达
YILIDA METAL MESH

EXPANDED METAL

SECURITY &
PROTECTION



ADVANCED EXPANDED METAL
MANUFACTURER & SOLUTION
PROVIDER

YILIDA

– NEVER STOP INNOVATING

SECURITY & PROTECTION



Security Fence

Unlike other security fence products on the market (woven mesh fence and welded fence), expanded metal security fence is made of one-piece solid steel plate by slitting and stretching. This special construction makes it so strong that intruders cannot cut it with common tools. Besides, it is hard to climb, so it offers high security and is widely used in road protection, construction sites, border security and other applications requiring security protection to protect the safety of facilities and personnel inside the fence.



We can offer common expanded metal fences, heavy duty expanded metal fences, hexagonal expanded metal fences, Gothic expanded metal fence and anti-glare expanded metal fences according to your applications. Moreover, our design and technical team will provide you with custom security fence solutions to perfectly suit to your special requirements.

Features

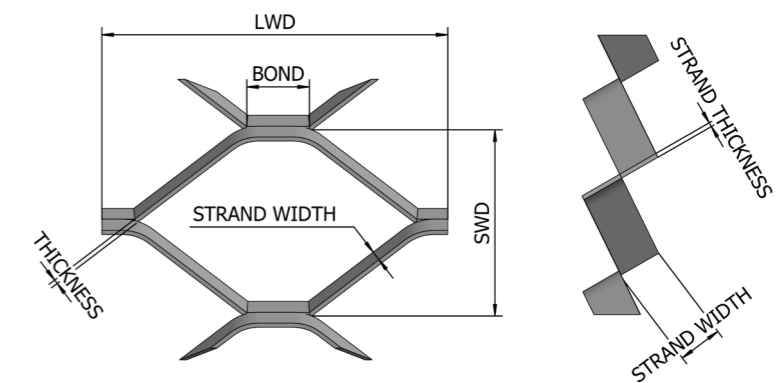
- **High strength.** Made of one-piece solid steel plate by slitting and stretching, no weld joints, its special opening structure offers good rigidity and can withstand heavy impact.
- **Anti-cut.** It cannot be cut easily with common tools and can delay and even prevent intruders from entering.
- **Visibility.** Through the uniform opening, the outside scene can be seen clearly.
- **Anti-climb.** Its special opening structure makes the intruder cannot find a foothold, thus preventing the intruder from climbing and crossing over the fence.
- **Extraordinary durability.** Expanded metal security fence after galvanized and powder coated surface treatment will not corrode easily even under rainy, moisture and other bad weather, thus reducing maintenance and replacement costs.



Common Expanded Metal Fence

Common expanded metal fences are generally made of standard expanded metal after hot dip galvanized or PVC coated treatment. It has excellent corrosion resistance and anti-aging performance and is widely used as road protection fences, bridge protection fences, stair handrails, balcony fences, farm fences, etc.

Diamond Opening Structure



Specification

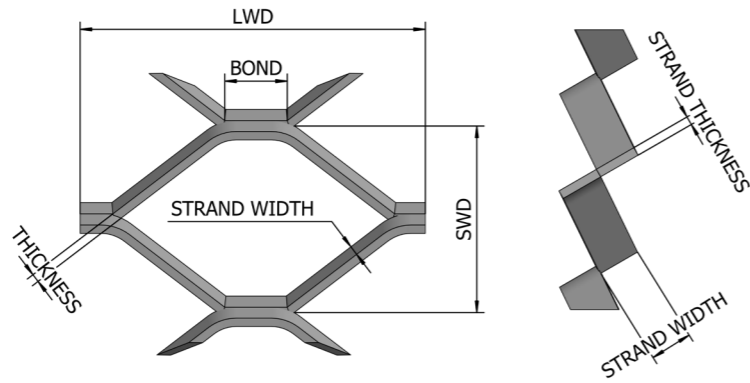
Material:	Carbon steel, stainless steel
Hole pattern:	diamond
Thickness:	3 mm – 5 mm
Opening size (SWD × LWD)	40 × 80 mm, 50 × 100 mm, 55 × 100 mm, 70 × 150 mm
Finish:	hot dip galvanized; PVC coated

Heavy Duty Expanded Metal Fence



Compared with common expanded metal fence, heavy duty expanded metal fence is made of a thick expanded metal, generally with a thickness of 8–10 mm. Therefore, it has higher strength and better anti-cut performance, it is a high security fence solution. It often works with barbed wire or bend the fence top to enhance its anti-climb performance and effectively delay and even prevent enemy invasion. It is widely used in airport, military protection, prisons, government agencies, public utilities and other places requiring higher security.

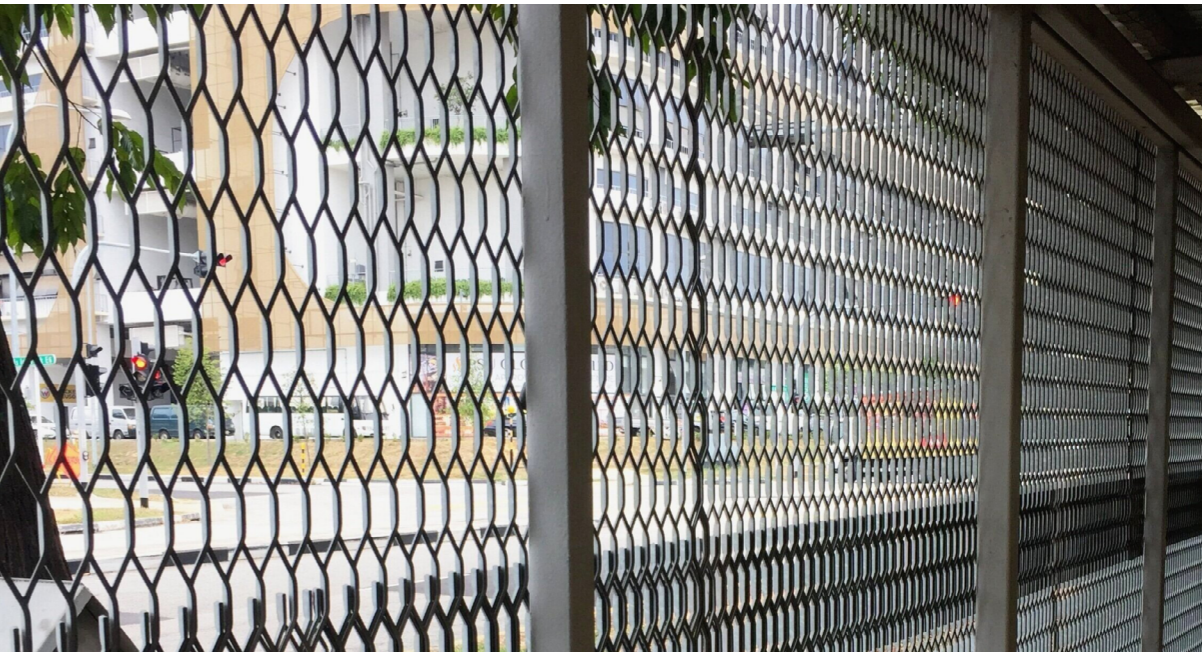
Diamond Opening Structure



Specification

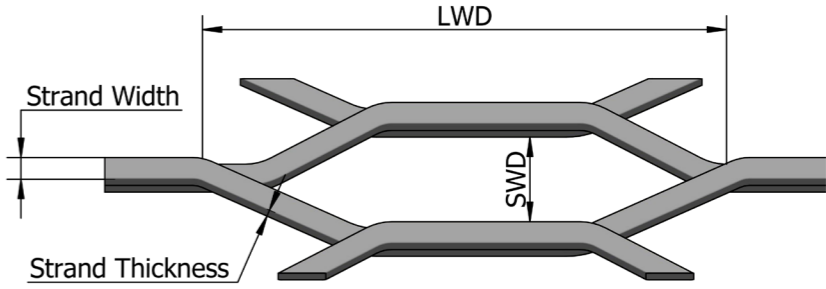
Material:	Carbon steel, stainless steel
Hole pattern:	diamond
Thickness:	8–10 mm
Finish:	hot dip galvanized.

Hexagonal Expanded Metal Fence



Hexagonal expanded metal fence has solid structure, high security and aesthetics. Its geometric construction delivers a greater open area, so it has better visibility and ventilation performance and is widely used as building fences, stair handrails, farm fences, etc.

Hexagonal Opening Structure



Specification

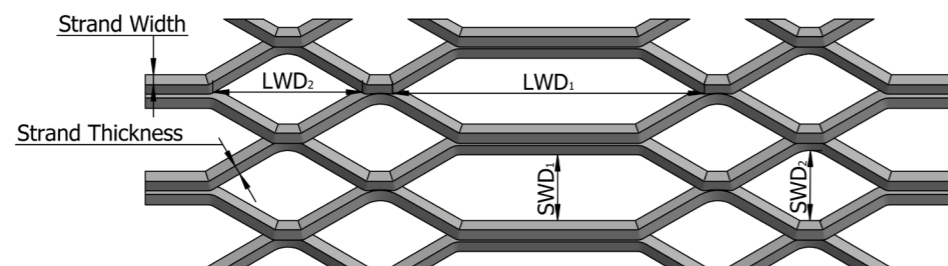
Material	Opening Size (mm)		Strand (mm)		Open Area	Weight (kg/m ²)
	LWD	SWD	Strand Width	Strand Thickness		
Carbon steel	45	13	5	3	24%	17.5
	45	18	4	3	55%	11

Gothic Expanded Metal



Gothic expanded metal fence is made of expanded metal with special-shaped openings and an attractive appearance. Its hot dip galvanized or powder coated surface makes it have excellent corrosion resistance and anti-aging performance, thereby enjoying a more durable lifespan. It is widely used in windows, gates, gardens, etc., and can provide both great security protection and amazing decoration effect.

Gothic Opening Structure



Specification

Material	Large Opening Size (mm)		Small Opening Size (mm)		Strand (mm)		Zinc Coating (g/m ²)
	SWD1	LWD1	SWD2	LWD2	Strand Width	Strand Thickness	
Hot dip galvanized steel	27	76	27	38	3.2	2.8	> 280
					2.3	3.2	
					2.4	3.2	
	25	80	25	40	3.2	2.8	
					2.3	3.2	
					2.4	3.2	

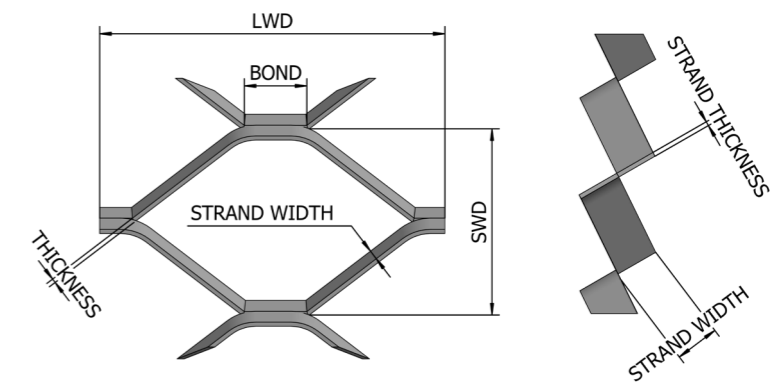
We can develop new moulds and provide Gothic expanded metal fence in other sizes.

Anti-Glare Expanded Metal Fence



Anti-glare expanded metal fence is made of expanded metal wrapped with metal frame. It is generally installed along two-way road isolation strips to ensure the continuity of the anti-glare facilities and its horizontal visibility and achieve anti-glare and isolation purposes, thereby safeguarding the driving safety of drivers.

Gothic Opening Structure



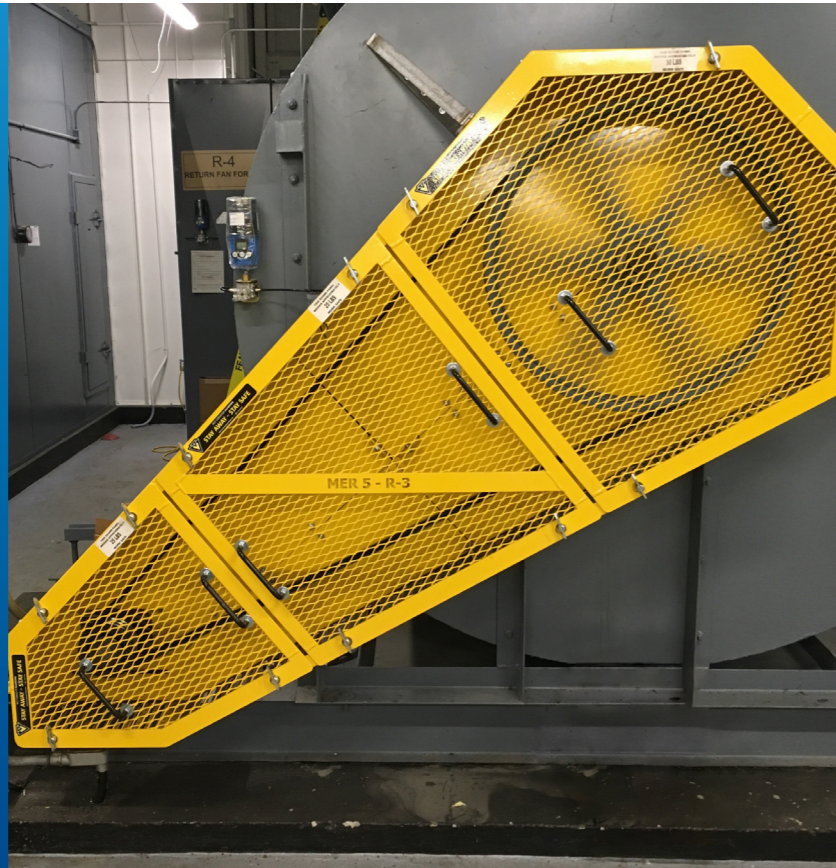
Specification

Material:	Carbon steel, stainless steel
Hole pattern:	diamond
Thickness:	2 mm – 3 mm
Opening size (SWD × LWD)	30 × 75 mm
Strand width:	8 mm
Color:	green, blue
Finish:	galvanized, powder coated

Machine Guards

Safety is always a great concern in production, especially in the manufacturing industry. The equipment operation not only brings us economic benefits, but also put operators in a dangerous workplace. So, machine protection becomes very important.

Our expanded metal machine guards are mainly used in machine perimeter protection and partial protection. The guard surface is generally electrostatic powder coated with alarming color, such as yellow and orange, aiming to reduce the occurrence of production accidents and ensure the personal safety of operators. All our expanded metal machine guards comply with OSHA (Occupational Safety and Health Administration) 1910.212 general requirements.



Features

- **Economical & eco-friendly.** Made of solid steel plate after slitting and stretching, no material is wasted during the production.
- **Visibility.** Uniform openings allow the free passage of air and light and can observe the equipment operation directly without removing the machine guards.
- **Safety.** Rigid structure and different opening size can effectively prevent fingers or body part from coming into contact with hazardous parts and protect the personal safety of operators.
- **Durability.** Powder coated surface offers enhanced corrosion resistance.
- **Formability.** It can be cut, bent and welded to meet the safety protection requirements of different machines.

Machine Partial Guards

It is mostly used to protect flywheels, fan blades, belt pulleys, gears, connecting rods and other machine components that transmit energy to protect workers operating or working around the machinery. Besides, it also prevents clippings or other sharp objects from entering the machine, thus reducing the equipment abrasion and protecting the key assets of the enterprise.

Machine partial guards are generally made of flattened expanded metal. It features good rigidity, stable structure and its flat, smooth surface not only provides great safety protection, but also facilitates the operator accessing to the machine.



Material	Carbon steel, stainless steel
Hole pattern	diamond
Thickness	2 mm – 3 mm
Opening size (mm)	5 × 23, 8 × 24, 10 × 32
Thickness	2 mm – 4 mm
Finish	electrostatic powder coated

Machine Perimeter Guards

It is generally installed along the machines are prone to causing injuries, such as cutting machines, milling machines, forming rollers and calenders, to protect workers from chippings, flying chips or metal sparks generated during the machine operating. It usually consists of multiple pieces of expanded metal with frames, which is strong and easy to install and maintain.

Material	Carbon steel, stainless steel
Hole pattern	diamond
Opening size (mm)	30 × 60, 35 × 75, 40 × 80, 50 × 100
Thickness	2 mm – 4 mm
Finish	electrostatic powder coated



Outdoor Machine Cages

Expanded metal not only plays an important role in machine guarding, but also is widely used in various outdoor equipment protection applications, such as outdoor air condensing unit protection cages, outdoor return passage machine cages and construction sit important item protection cages.

Our expanded metal outdoor machine cages feature sturdy structure, good anti-cut performance and can effectively prevent vandals from damaging and attacking the important parts of outdoor equipment. In addition, the machine cage after powder coated treatment can resist the erosion of rain, hail and other bad weathers, and enjoy a longer service life.



Material	Opening Size (mm)		Strand (mm)		Open Area
	SWD	LWD	Strand Thickness	Strand Width	
Carbon steel,	22.58	50.8	3	3.12	72%
stainless steel	40.64	85.73	3	3.18	84%

EXPANDED METAL

ADVANCED EXPANDED METAL
MANUFACTURER
& SOLUTION PROVIDER

Anping Yilida Metal Wire Mesh Co., Ltd

Address: Wire Mesh Development Zone, Anping County, Hengshui City, Hebei Province, China. 053600

Tel: +86-13932824722

Whatsapp: +86-311-89948200

Email: inquiry@wiremesh-yld.cn

<https://www.yld-wiremesh.com>

